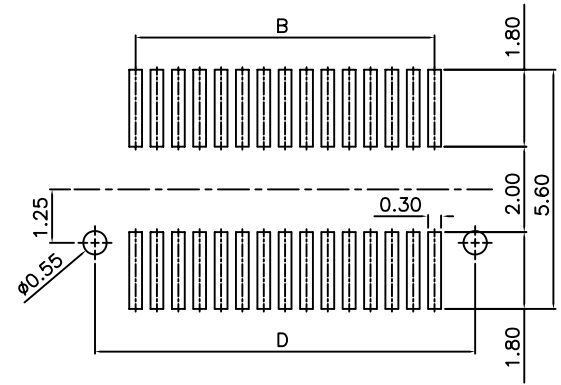
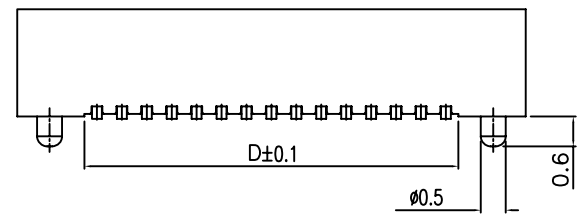


ORDER INFORMATION

BT05 - S - HXX - XX

Series Base Height No. of pos

P : Plug
S : Socket



P.C.B PATTEN

	HIGH	PLUG	SOCKET
3.0	2.2	0.8	
3.5	2.2	1.3	
4.0	3.0	1.0	
4.5	3.5	1.0	
5.0	3.0	2.0	
5.5	3.5	2.0	
6.0	4.0	2.0	
6.5	4.5	2.0	

	A	B	C	D		A	B	C	D
10P	5.20	2.00	3.90	2.50	36P	11.70	8.50	10.40	9.00
12P	5.70	2.50	4.40	3.00	38P	12.20	9.00	10.90	9.50
14P	6.20	3.00	4.90	3.50	40P	12.70	9.50	11.40	10.00
16P	6.70	3.50	5.40	4.00	42P	13.20	10.00	11.90	10.50
18P	7.20	4.00	5.90	4.50	44P	13.70	10.50	12.40	11.00
20P	7.70	4.50	6.40	5.00	46P	14.20	11.00	12.90	11.50
22P	8.20	5.00	6.90	5.50	48P	14.70	11.50	13.40	12.00
24P	8.70	5.50	7.40	6.00	50P	15.20	12.00	13.90	12.50
26P	9.20	6.00	7.90	6.50	60P	17.70	14.50	16.40	15.00
28P	9.70	6.50	8.40	7.00	80P	22.70	20.40	21.40	20.00
30P	10.20	7.00	8.90	7.50	100P	27.70	25.40	26.40	25.00
32P	10.70	7.50	9.40	8.00					
34P	11.20	8.00	9.90	8.50					

DRAWG NO	SOCKET	PA 9T	QUANTITY	C5210R-1/2H : t0.2	TREATMENT	REFERENCE
	PART NAME	MATERIAL	SCALE	SPECIFICATION		
		UNIT	N/S		0.5mm SOCKET	
		APPROVAL	DESIGN	DRAW	0.5mm BOARD TO BOARD	
		REVISION	SIGN		BT05-S	
MARK	DATE					